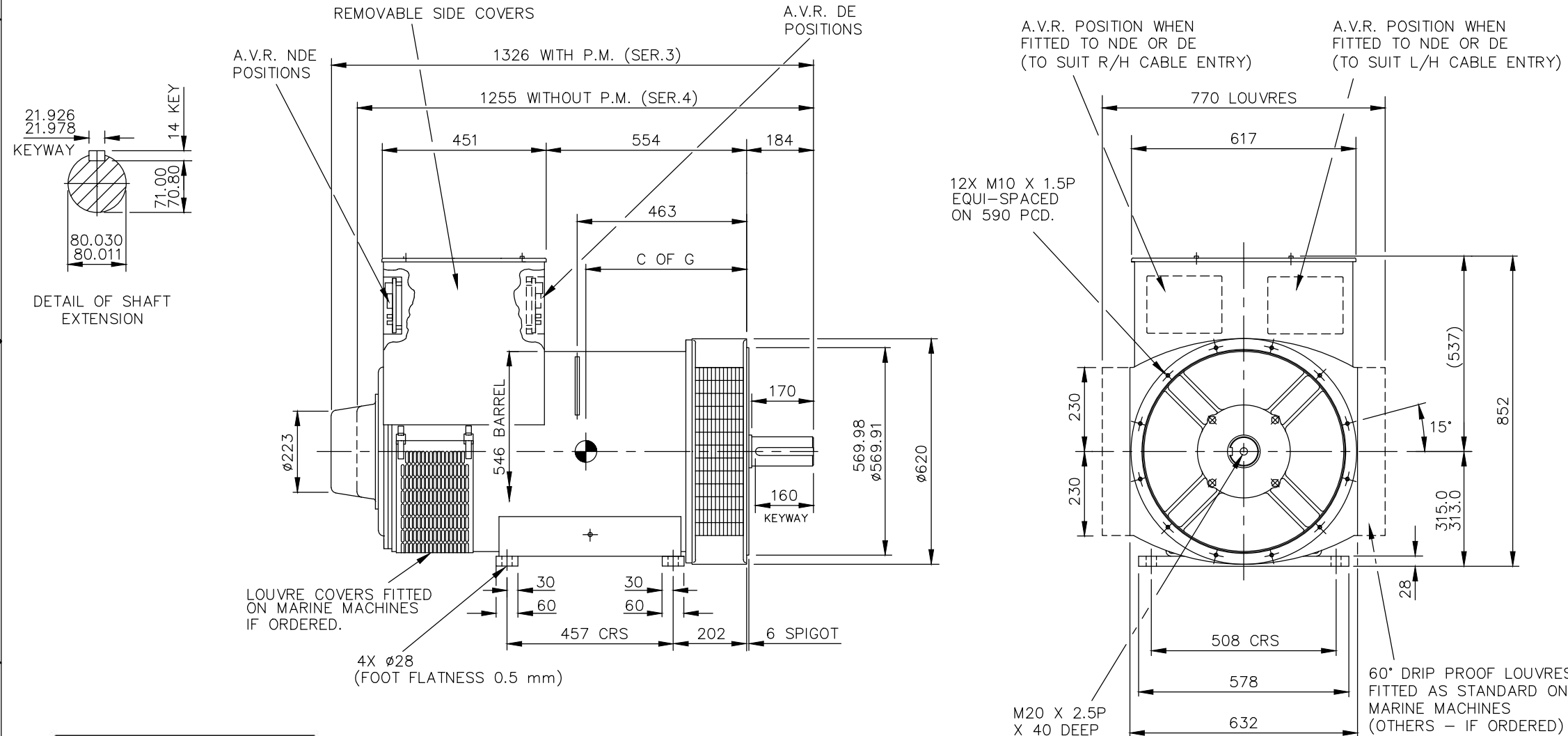


AutoCad

CORE	C OF G (mm)	WEIGHT (KG)
C	433	885
D	453	950
E	474	1030

NOTE: -
 1. CUSTOMER MAY CUT CABLE ENTRY HOLES AS REQUIRED IN ANY OF THE FOUR TERMINAL BOX SIDES SUBJECT TO POSITION OF A.V.R, TERMINALS, ETC.



Greenpower AB
 Helsingborgsvägen Varalöv,
 262 96 Ängelholm, Sweden
 Phone: +46 43122240
 Email: info@greenpower.se
 Web: www.greenpower.se

UNLESS OTHERWISE SPECIFIED, ALL DIMENSIONS ARE IN MILLIMETERS

SCALE 1:10

SIM TO 41-4495

DO NOT SCALE PRINT

DRAWN P_PACHPUTE

CHECKED A_BIRARI

APPROVED B_SURVE

DATE 14NOV16

FOR INTERPRETATION OF DIMENSIONING AND TOLERANCING, SEE ASME Y14.5-2009

Green Power

DRAWING, GENERAL ASSEMBLY

S4L1S CDE 2-BRG, SAE NONE, Ø80 X 170L STD T/BOX

SITE CODE STA

FIRST USED ON S4

DWG SIZE A4

A056P335

CAD SHEET 1 OF 1

THIS DOCUMENT (AND THE INFORMATION SHOWN THEREON) IS CONFIDENTIAL AND PROPRIETARY AND SHALL NOT BE DISCLOSED TO OTHERS IN HARD COPY OR ELECTRONIC FORM, REPRODUCED BY ANY MEANS, OR USED FOR ANY PURPOSE WITHOUT WRITTEN CONSENT OF CUMMINS INC.