



ECO POWER SERIES

EP24/100

AGG. 05/24

NOMINAL POWER		STORAGE CAPACITY
kVA	kW	kWh
24	19,2	103,6

ENVIRONMENTAL CONDITIONS	
Temperature	-10°/+40° C
Height	1000 mslm
Humidity	60%



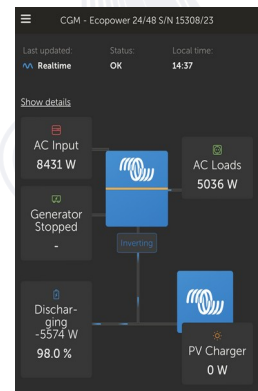
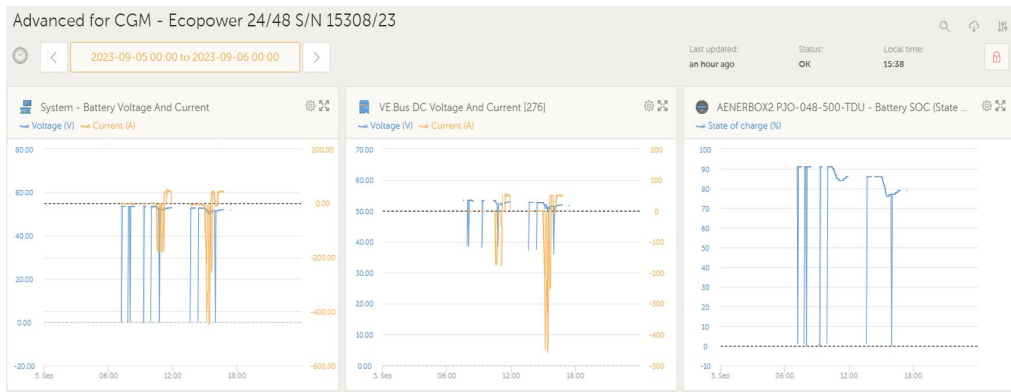
The image is only for demonstration purposes

WEIGHT	DIMENSIONS		
kg	L [mm]	W [mm]	H [mm]
1066	1650	1180	2050



TECHNICAL DETAILS

ELECTRICAL DATA	Electrical system type	3F+N	
	Power factor	0,8	φ
	Voltage	400	V
	Frequency	50	Hz
	PRP Ampere rating	34,6	A
BATTERY	Type	LiNMC	
	Quantity	2	
	Power	24 kVA / 103,6 kWh	
	- Cycles @ 90%	6000	
RECHARGE TIME	20 – 90%	2.45	Hr
	20 – 100%	3.10	Hr
INVERTER	Type	Inverter Victron	
	Quantity	3	
	Power	8	kVA



All data can be found out in the original technical datasheet of the engine and the alternator. Values shown are nominal values, they can change in every moment and without warning.

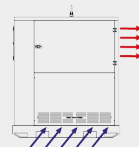
ELECTRIC PANEL



1. 7" touchscreen display and control board
2. Voltmeter
3. Insulation monitoring of AC network
4. Insulation monitoring of DC network
5. Device circuit breakers
6. Emergency button
7. Stop car charging and start car charging
8. Single phase output sockets
9. Charging socket for the electric car
10. Three phase output sockets
11. Mains inlet plug
12. Generating set inlet plug
13. MC4 connectors for photovoltaic system

OUTDOOR CANOPY



<i>Self-supporting frame material</i>	<i>Galvanized steel sheet, electro-welded, minimum thickness 1,5 mm</i>
<i>Canopy material</i>	<i>Galvanized steel sheet, electro-welded, thickness between 1,5 mm</i>
<i>Painting</i>	<i>Polyester powder RAL5024 textured, outdoor-proof</i>
<i>Access openings</i>	<i>n.3 doors with key padlockable lock</i>
<i>Electric panel</i>	<i>Front side position. Dedicated door with key lock</i>
<i>Fresh air intake and hot air expulsion</i>	
<i>Lifting system</i>	<i>n.1 pivoting hook</i>
<i>Support feet</i>	<i>Rental base</i>

Postadress

Greenpower AB
Helsingborgsvägen, Varalöv
262 96 ÄNGELHOLM

Telefon

0431-222 40

Web

www.greenpower.se

E-mail

torle@greenpower.se